



Pembroke Lodge

The Perfect Corporate Events Venue



www.pl.org.uk



conferences@pl.org.uk



020 8940 8207



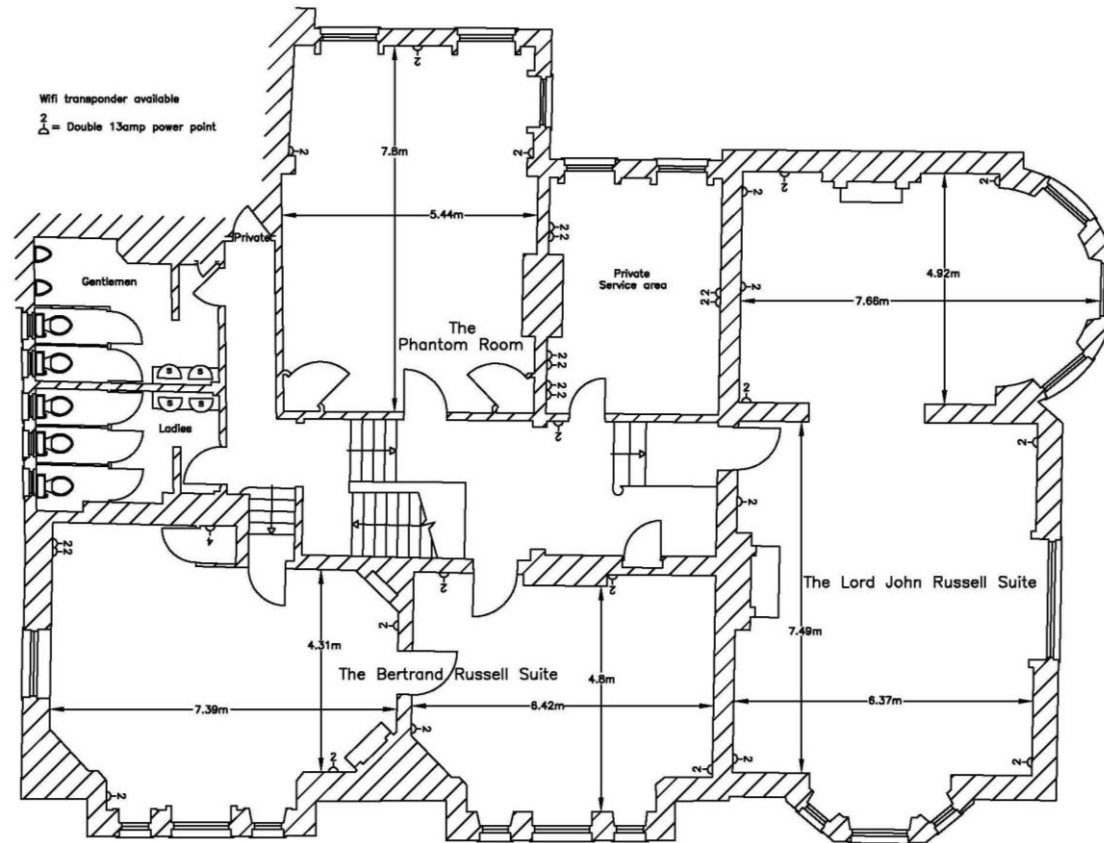
A magnificent Georgian Mansion set in some 2500 acres of Richmond Park with spectacular views across the Thames valley to Windsor and Surrey.

The Lodge is situated approximately half a mile from the Richmond Gate entrance to the Park, with easy access to the M3, M4 & M25 motorways. The nearest 4* hotels are within a 5 minute drive or a pleasant 15 minute walk. We offer free parking for up to 300 cars immediately in front of the Lodge gardens.



The Russell Suite

A suite of three rooms situated on the first floor of the Lodge. All rooms have natural daylight and full blackout facility. The Russell Suite has recently been completely refurbished, offering excellent facilities for conferences, meetings, private lunches and dinners. Full bar facilities and wifi are available.



The Lord John Russell Suite

Two elegant period rooms connected by a large archway with ornate fireplaces and bay windows. The rooms have dimensions of 7.5m x 4.9m & 7.5m x 6.3m.

Style	Seating Capacity
Boardroom	28
Classroom	30
Cabaret	40
Theatre	70
U-shape	26



The Bertrand Russell Suite

Two rooms with fabulous views to the west. The two rooms have dimensions of 6.5m x 4.3m and 7.4m x 4.3m.

Style	Seating Capacity
Boardroom	12
Classroom	12
Cabaret	n/a
Theatre	15
U-shape	n/a



The Phantom Room

An elegant period room with dimensions of 7.9m x 5.5m.

Style	Seating Capacity
Boardroom	22
Classroom	30
Cabaret	16
Theatre	45
U-shape	15



The Russell Suite Costs:

Room Hire - £350 per day (9am-5pm)

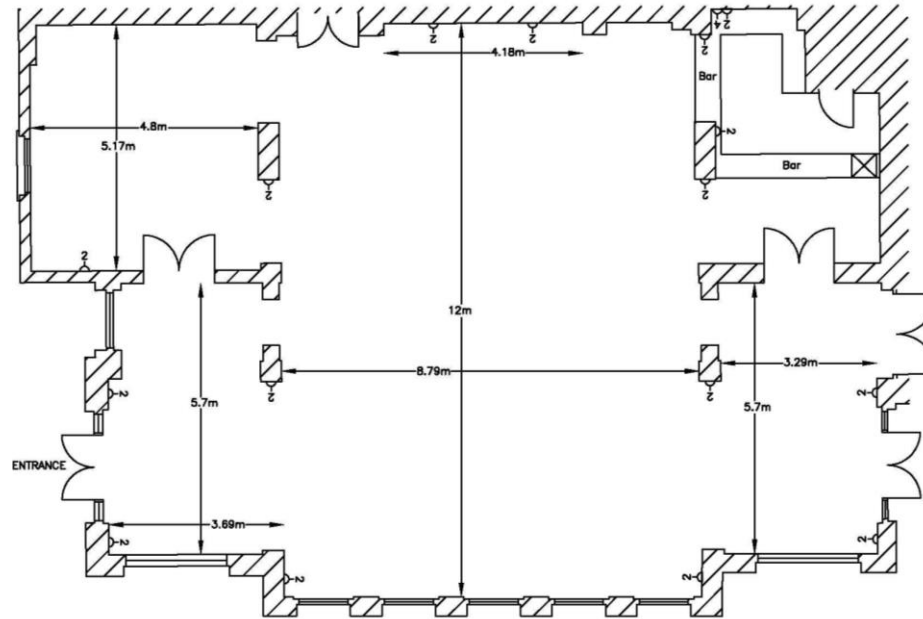
To remain competitive our Day Delegate Rates are:

4-10 delegates:	£55 per person
10-20 delegates:	£50 per person
over 20 delegates:	£45 per person



The Belvedere

The Belvedere is a purpose built banqueting suite on the ground floor leading out onto the terrace with stunning views. It comes complete with PA system and audio visual points, as well as full bar facilities if required.



Broadband Wifi available
 Base PA system with radio microphone
 Fibre optic starlight ceiling
 Discotheque lighting
 Discotheque console and loudspeakers
 Full disabled access

⏏ = Double 13amp power point

Style	Seating Capacity
Boardroom	50
Classroom	100
Cabaret	60
Theatre	160
U-shape	50

The Belvedere Costs:

Room Hire: £450 per day (9am-5pm)

To remain competitive our Day Delegate Rates are:

20-30 delegates:	£60 per person
30-40 delegates:	£55 per person
40-50 delegates:	£50 per person
Over 50 delegates:	£45 per person

Day Delegate Rate Includes:

- *Coffee and Danish Pastry on arrival*
- *Mid- morning refreshments*
- *Delicious two course buffet lunch prepared by our own chef (see menus)*
- *Afternoon tea, coffee and homemade cake*
- *Flipcharts, pads and pens*
- *6ft Tripod screen*
- *PA System with microphone (Belvedere)*
- *Mineral water*
- *Complimentary parking*
- *AV equipment is available
(data projectors can be hired at additional cost)*
- *WiFi/Internet access*

How to find us

Pembroke Lodge is situated within seven miles of central London and Heathrow Airport. Access by car is convenient via one of 5 gates into the park.

Richmond Park is the largest, and to many, the most beautiful Park in London as it comprises some 2500 acres of totally unspoilt classic English parkland. Pembroke Lodge is set within 11 acres of beautifully landscaped grounds.

By Car

From the West - Follow the M3/A316, come off at Richmond, follow signs through the town to the Park (up Richmond Hill or Queens Road) and enter through the Richmond Gate. Turn right at the mini roundabout and the car park is on the right.

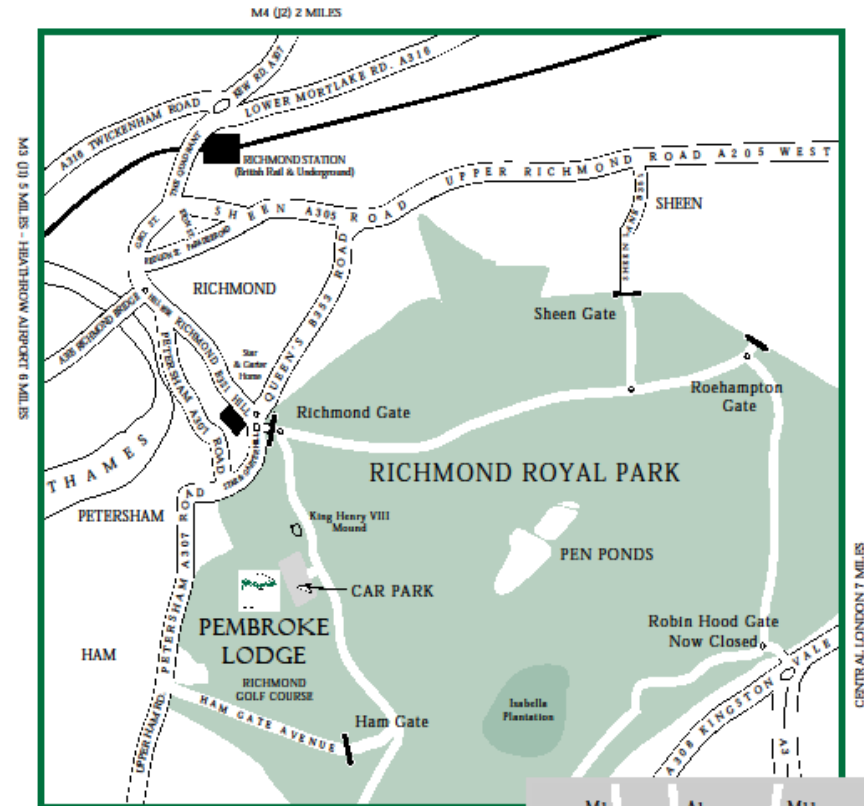
From the North - Head down the A205 South Circular Road to Richmond, then as west.

By Rail

The closest British rail station is Richmond. Trains to Richmond are available from all mainland stations in the south-east:- Waterloo, Victoria and East Croydon, all of which transit Clapham Junction. Pembroke Lodge is a short taxi ride away from Richmond Station. A taxi rank is located directly outside the station. To plan your journey visit: <http://www.nationalrail.co.uk>

By Bus

The closest bus stop is outside the American University - 371 bus from Richmond Town Centre or Kingston. The Lodge is then about a 15 minute walk away through the Park.



Free on site parking for 300 cars.
The Park gates are closed at dusk, thereafter
Richmond Gate is manned by our staff.

*Due to the deer and other wildlife please take extreme
care whilst driving in the Park. It is a place of outstanding
beauty - enjoy it!*

